

Operating Instructions for the use of:

idc VARIO-Safe

for 'Sharps & Contaminated Medical Waste' Models: QSvo 1.5, 2.3 Litre

Sharp and pointed objects, or contaminated articles generated during daily use, can be a danger to life and limb if used incorrectly. Please follow these Operating Instructions and Safety Guidelines.

1. Fitting the Lid

Before filling, firmly press the Lid (1) onto the bottom section of the Container (2) - the Base - until you hear the Lid (1) lock into place.

2. Everyday Use

For everyday use, lightly press the Day Lid (3) only on one side (eg. E) down into the lid opening (4). The lid can be re-opened again by lifting the lid at point (F)

3. FINAL CLOSURE - Sealing the day lid (3)

After the container is FULL proceed as follows; Place the container on a firm surface and press the day lid (3) firmly into the lid opening (4) until you hear it lock into place - an audible 'click'. Next, tear / twist off the lid tab (10). This is done to indicate that the container is firmly locked / sealed and cannot be opened. **Caution:** do not fill the container higher than the level indicator ("Fill-Line") (5) on the Container.

4. Level Indicator ("Fill-Line")

At the top section of the Container a level indicator (5) is visible. Under no circumstances fill the Container above the level indicator. For security reasons do not exceed the maximum fill height.

5. Bracket

5.1 Wall Holder (7)

If you are using the wall holder (7), attach the sharps container by firstly placing the top edge (8) in the centre and under the claw (9) of the wall-holder. Next, press the bottom part of the container (2) against the wall-holder (refer to the arrow shown in the diagram). The Vario container will now lock onto the wall-holder.

5.2 Tray (12) - Fix into recess

Place the Vario container - from above - into the long tray recess (11). The container is now secure in the tray and ready to use. For twisting off or removing cannulas please follow the instructions at points 6.2 and 6.3

6. Pull-off/Twist-off device

6.1 Recess with steps (A)

With blood collecting systems, insert the cannula lug into the indented recess (A) until the edges of the blood collecting system interlock. Turn the cannula anti-clockwise until the cannula is twisted off. The cannula will then fall into the bottom part of the container (2).

6.2 Semicircular recess (B)

This notch (B) is used to remove normal cannulas from the syringe. If the used blood collecting system fits into this recess (B), turn the cannula anti-clockwise until it falls into the bottom part of the sharps container.

6.3 Stellar multi-toothed opening (C)

Twist off device for insulin pens. After the use of the insulin pen, position the pen-cannula into the round multi-tooth opening (C) and rotate the pen anti-clockwise a few times. When the cannula is twisted off, push the insulin pen slightly deeper into the multi-tooth opening (C). The pen-cannula then falls into the container.

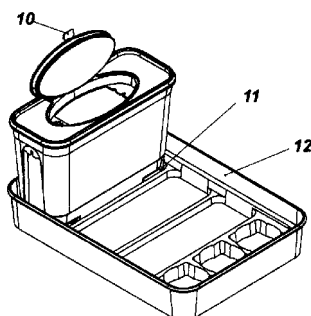
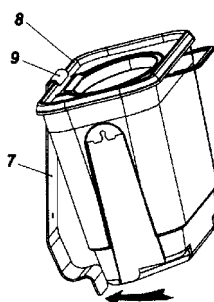
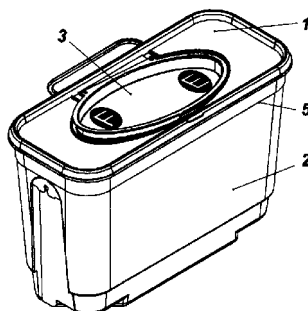
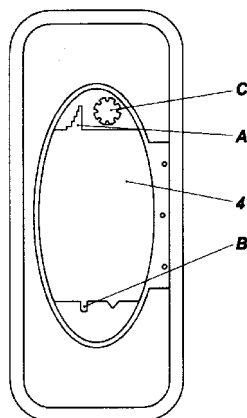
(i) Use for the Proper Purpose

This Container is only for use in the disposal of medical waste; eg. cannulas, syringes, scalpels and broken glass. Using it in any other way is contrary to the proper purpose.

If used contrary to the proper purpose, IDC Medical is not liable. Always follow the guidelines prescribed by the Infection Control Association. Dispose of properly according to regional regulations & requirements.

(ii) General Description

The Vario-Safe is manufactured from environmentally friendly polypropylene. There are no harmful emissions if the container is incinerated. Manufacturing data, such as date of production (month/year) and serial number are stated on the container for batch tracing purposes.



Safety Guidelines

- Before filling the Sharps Container, the Lid (1) has to be on and locked into place
- Do not reach into the Container with your hand or in any other way (risk of injury)
- Do not push any objects forcefully into the Container
- Do not attempt to press the sides of a filled Container together from the outside in any way.
- Before disposing of the Container, make sure, that the Lid (3) is closed tightly into the Container Lid Opening (1)
- Scalpels should be disposed of with extra care.
- If too much force is used while inserting objects or filling the Container, there is the danger of tilting and / or damaging the Container wall or the bottom of the Container.
- Do not pour fluids into the Container
- To avoid the Container accidentally tipping over, secure the Container in the recommended Tray. Otherwise fit to Vario wall-holder (bracket).
- Follow the operating instructions and pay attention to the 'Biohazard Label' on the Container
- Do not shake the Container. Do not drop the Container
- Before closing the Container, make sure there are no objects protruding out. If that is the case, remove them.
- Always close the Container by hand, never use force
- Do not use the Hinged Lid (3) to push in objects that are being disposed of.
- Never drop hazardous material transversely into the Container. Always deposit waste vertically.
- After FINAL CLOSURE do not press the Container against your own body (e.g. chest)
- Should the operating instructions and safety guidelines not be followed, IDC Medical cannot be held liable.
- **Sharp and pointed objects do not belong in plastic bags or other unsuitable containers.**

Note:

The images and information in these Operating Instructions are subject to technical change if necessary

IDEAS DEVELOPMENT CORPORATION PTY. LIMITED

ABN 84 078 760 504 ACN 078 760 504

Incorporating IDC Medical

Phone : 02 4321 0299 ~ Fax : 02 4321 0288

Web site : www.idcmedical.com e-mail : sharps@idcmedical.com

OFFICE & WAREHOUSE MAILING ADDRESS

16 / 13 Gibbens Road, West Gosford NSW PO Box 6290, Kincumber NSW 2251